

ΥΛΙΚΑ ΠΟΤΑΜΟΥ

Κωδικός	Υλικό ποταμού	Μέγεθος σωματιδίων (cm)
1	Βραχώδες υπόστρωμα	
2	Ογκόλιθοι	> 25
3	Κροκάλες	7-25
4	Χαλίκι	0.2-6.9
5	Άμμος	0.1-0.19
6	Λάσπη/Πηλός/Ιλύς	< 0.1

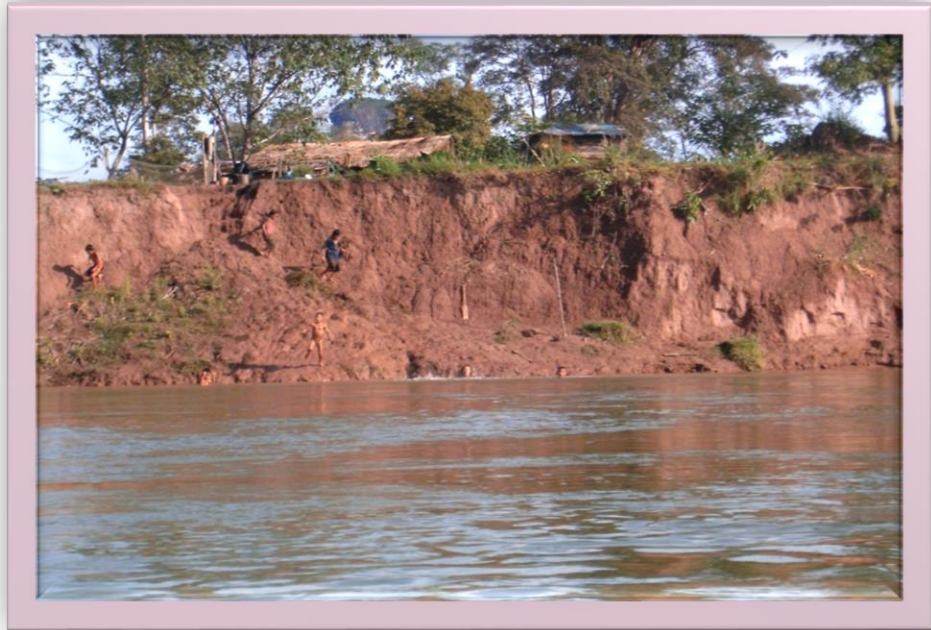


ΙΑΥΣ



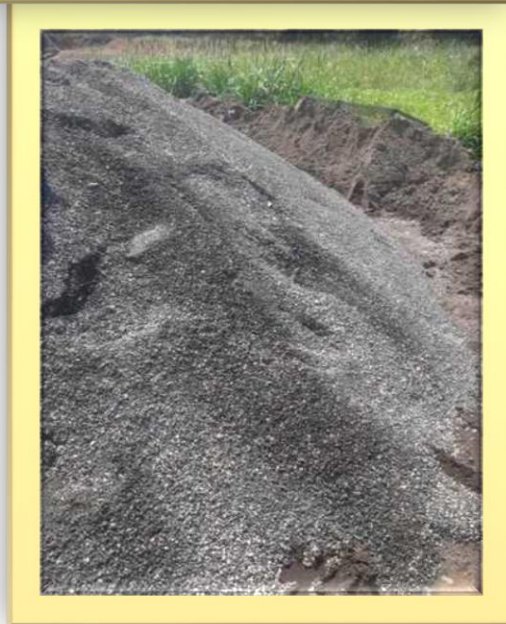


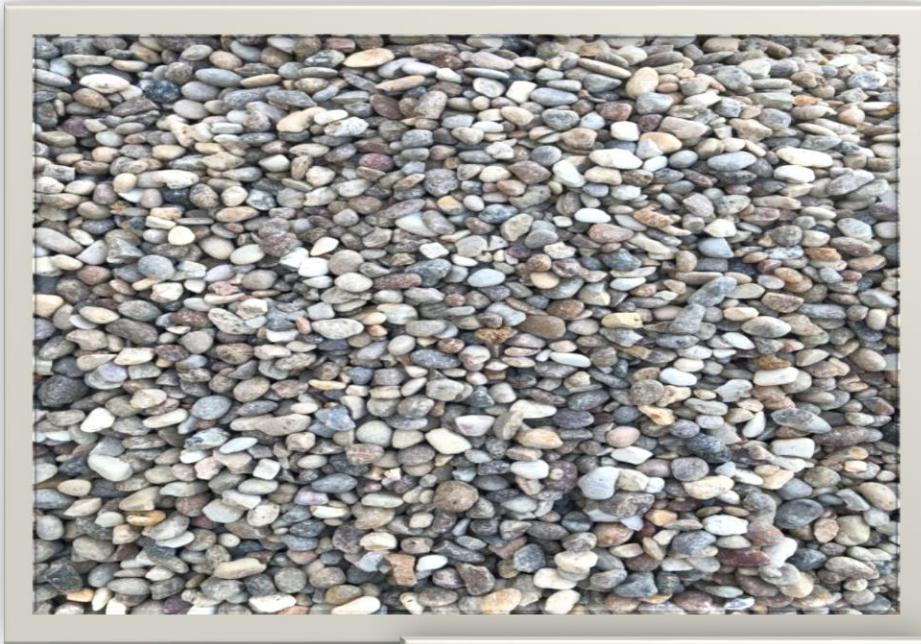
ΑΡΓΙΛΟΣ



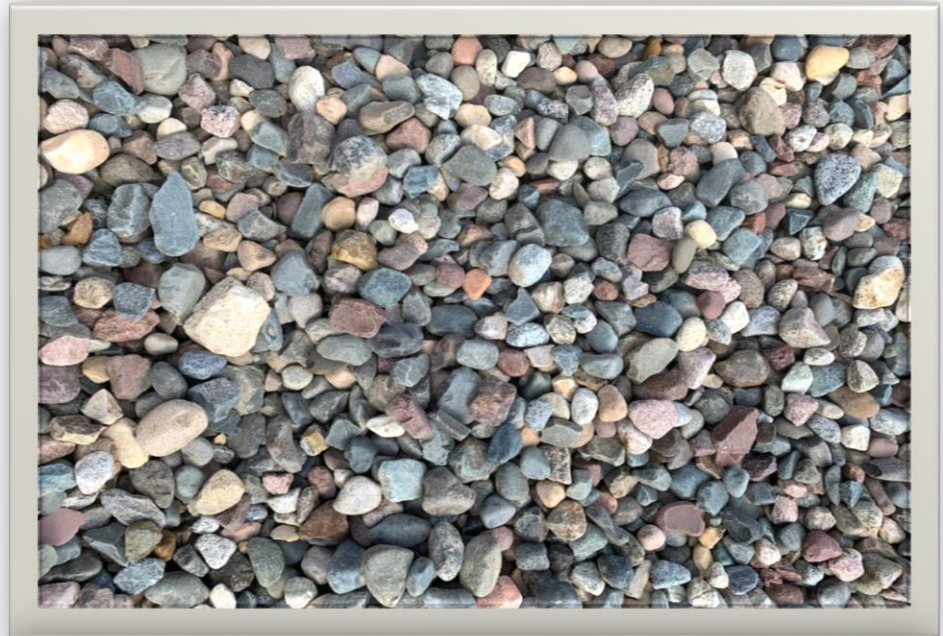


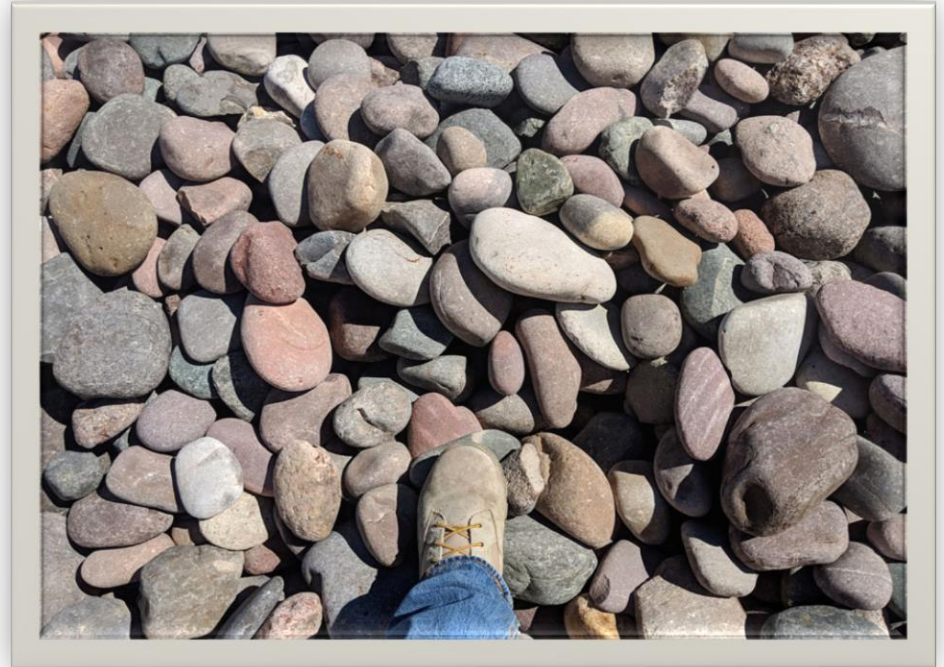
ΑΜΜΟΣ



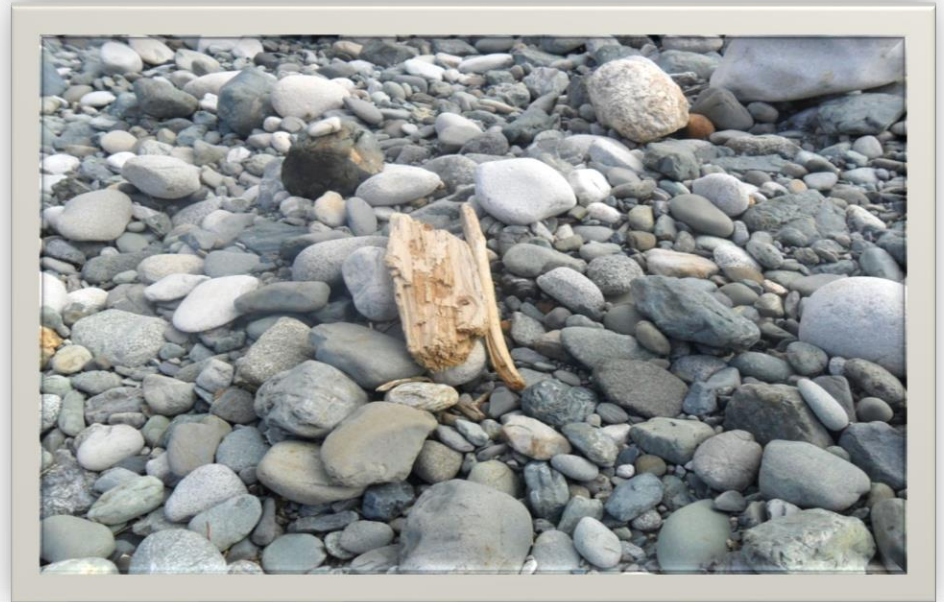


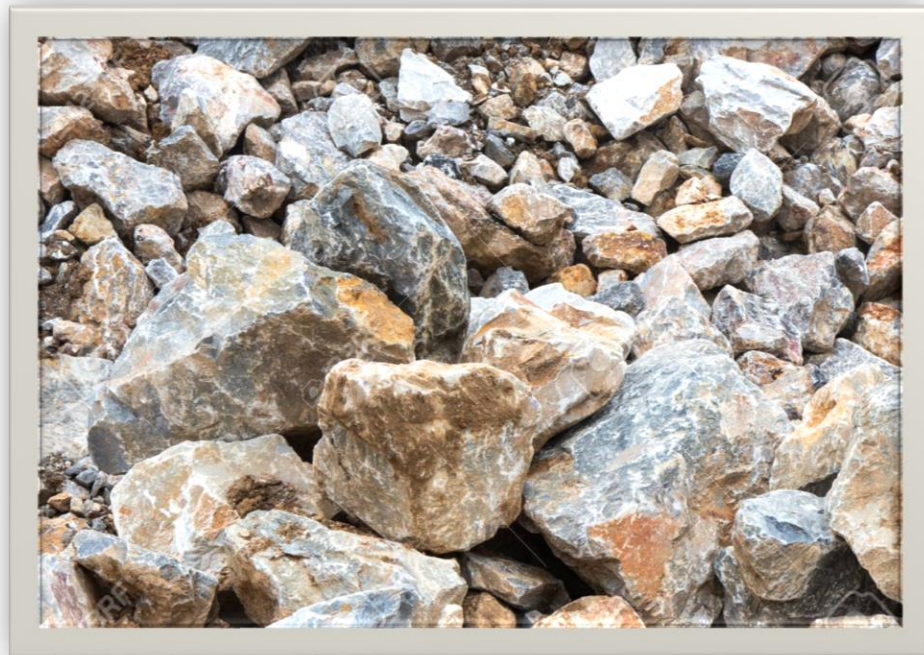
ΧΑΛΙΚΙΑ





ΚΡΟΚΑΛΕΣ





ΟΓΚΟΛΙΘΟΙ

